



DEPOT SQUARE FLATS  
@DEPOTSQUAREFLATS

# HISTORIC Meets Modern

Depot Square Flats gives a modern twist to historic apartment living.

Centrally located in the heart of Downtown Batesville, Indiana, within walking distance of local food, shopping, & entertainment.

Pet-friendly loft, one bedroom, & two bedroom luxury apartments. Floor plans range from \$995-\$1,495.

# OPEN NOW

Luxury apartments with key-FOB entry, efficient heating/AC, low flow plumbing, and in-unit washer & dryer.

Stunning kitchens with windowed cabinets, quartz countertops, stainless steel appliances, & a movable island. Modern bathrooms with LED mirror lighting & walk-in tile showers.

## Unit Features

- Soaring 12' High Ceilings
- Large Insulated Windows
- Luxury Vinyl Tile & Carpet
- Cable, Internet, Water, Sewage, & Trash **INCLUDED!**

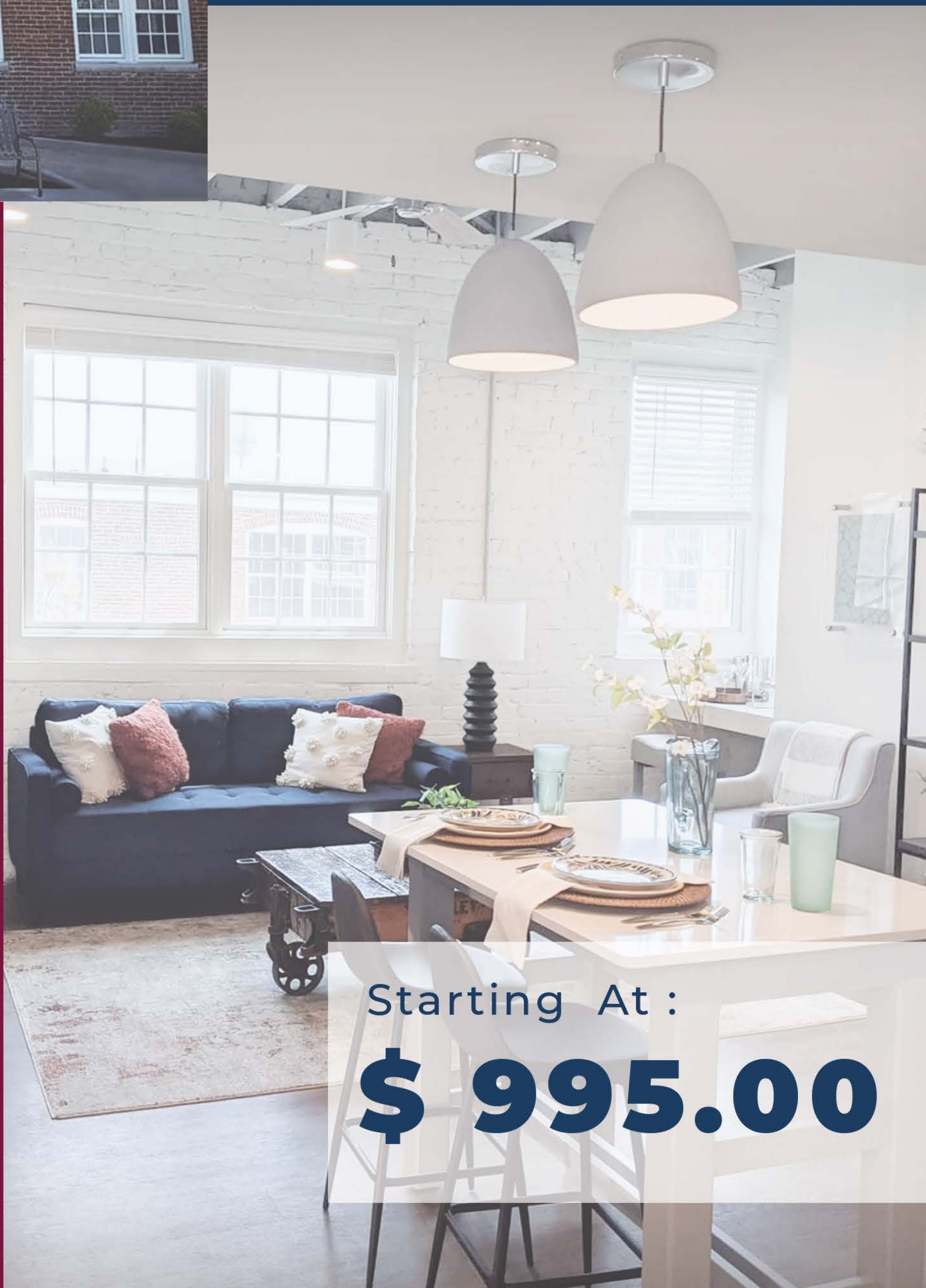
## CONTACT

 (812) 596-3528

 [DepotSquare@FLCO.com](mailto:DepotSquare@FLCO.com)

 [DepotSquareFlats.com](http://DepotSquareFlats.com)

 315 E Pearl Street,  
Batesville, Indiana 47006



Starting At :

# \$ 995.00



## CONTACT:



(812) 932-3528



DepotSquare@FLCO.com



[DepotSquareFlats.com](http://DepotSquareFlats.com)



315 E Pearl Street,  
Batesville, Indiana 47006

## DEPOT SQUARE FLATS

# Pet-Friendly COMMUNITY

Depot Square Flats is NOW LEASING historic studio, one bedroom, two bedroom, & loft luxury apartments in Downtown Batesville!

Depot Square Flats is a living piece of Batesville history. The century-old building has been restored & factory fixtures repurposed. Antique RomWeber Furniture, historic décor, photos, & memorabilia can be found throughout the apartment building.

## Community Amenities

- Fitness Center
- Theatre Room
- Resident Lounge
- Fully-Stocked Coffee Bar
- Dog Washing Stations
- Indoor Parking Garage
- Secure Building Access

Starting At:

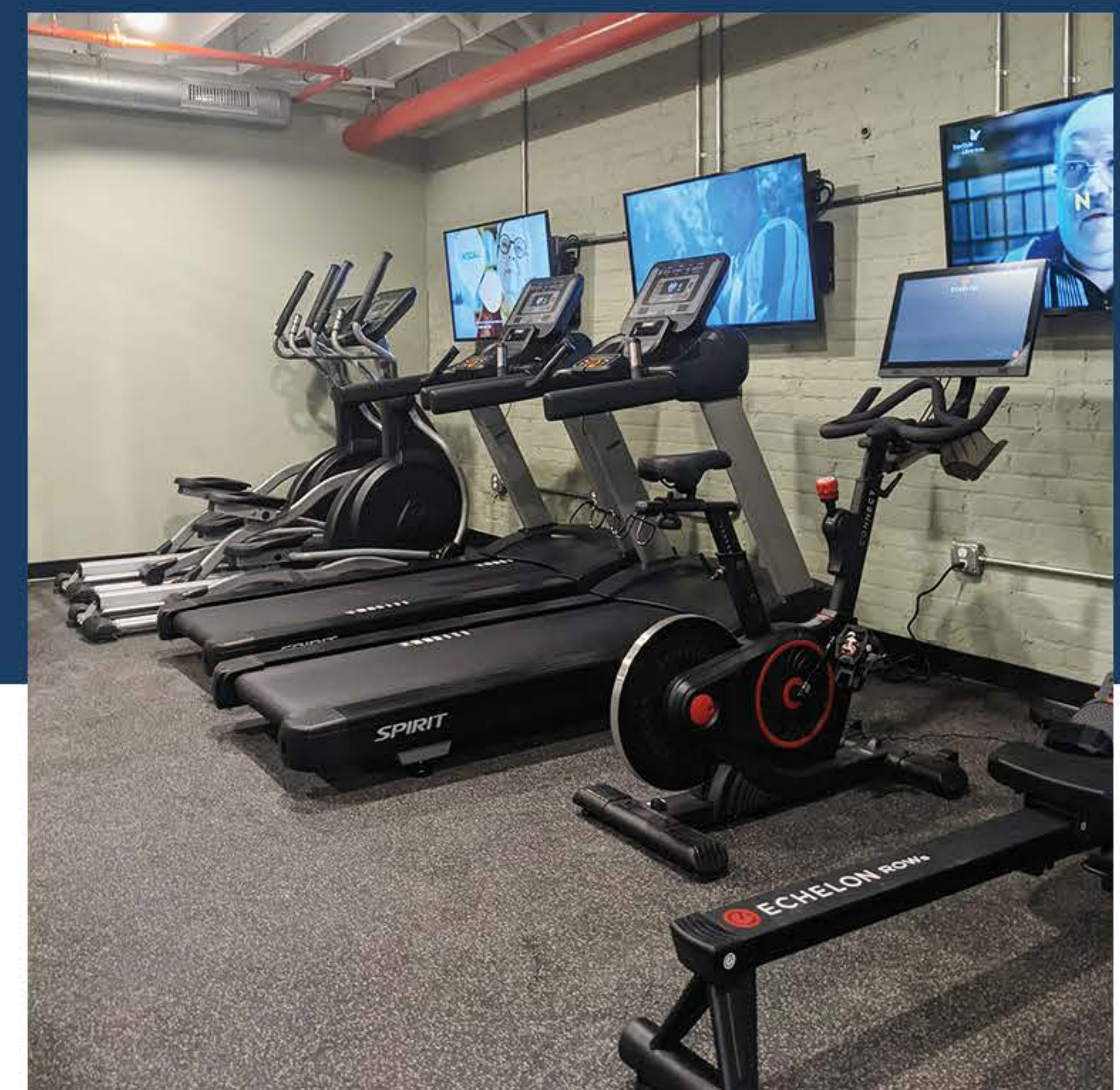
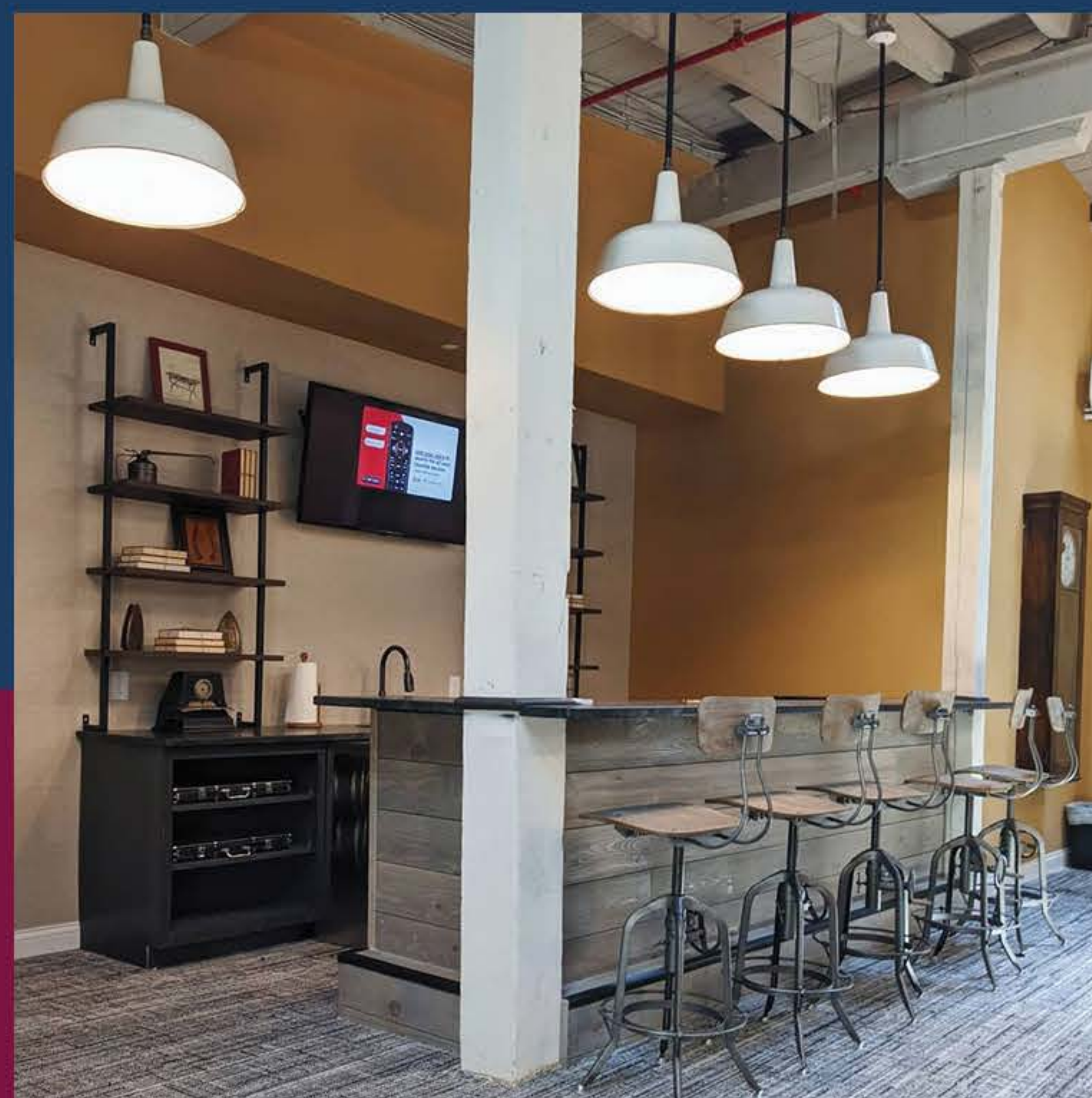
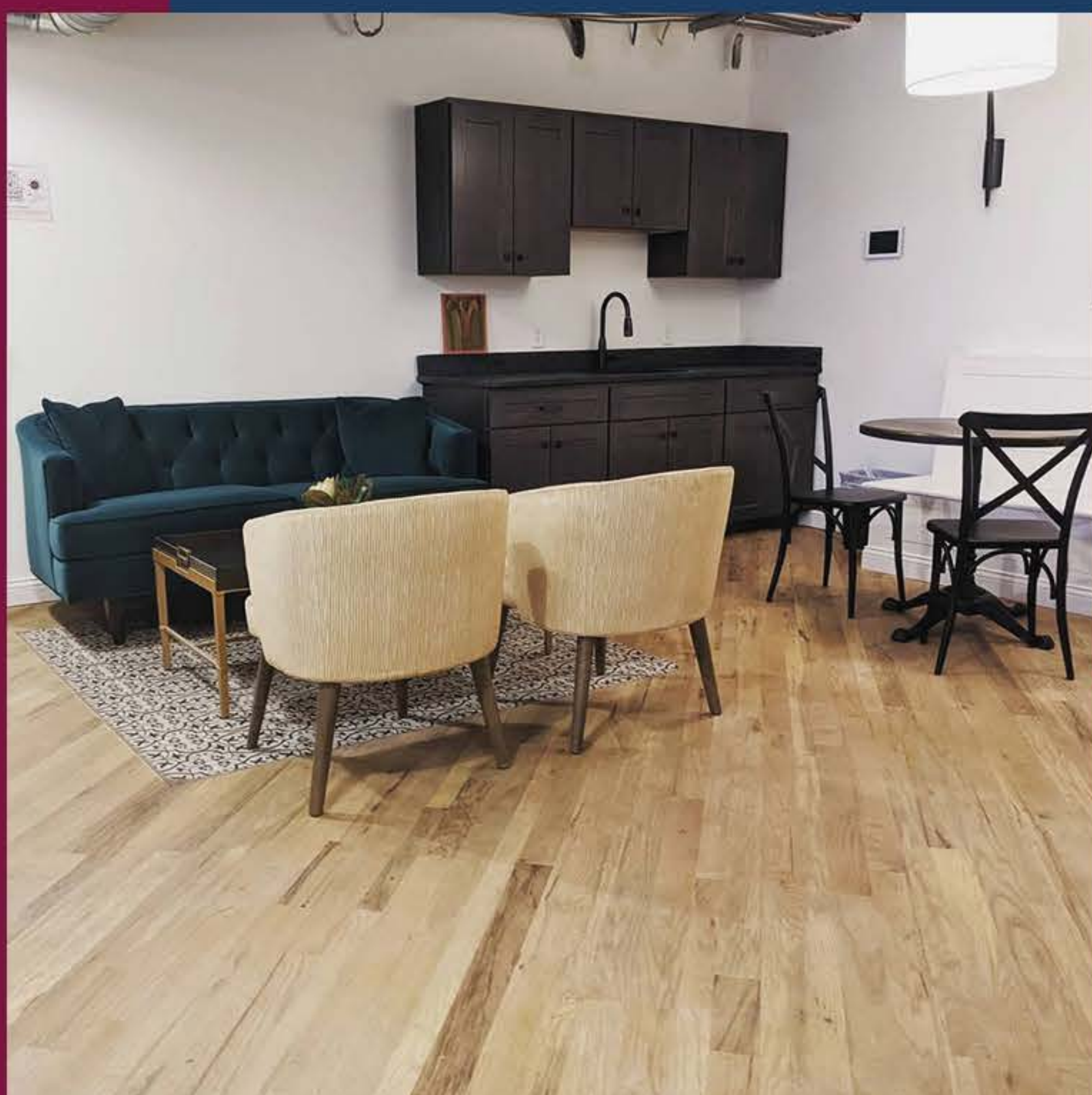
**\$ 995.00**

## WELCOME TO HISTORIC APARTMENT LIVING

Luxury apartments feature 12' high ceilings, quartz counter tops, stainless steel appliances, moveable kitchen islands, tiled walk-in shower, LED bathroom mirror lighting, in-unit washer/dryers, & Luxury Vinyl Tile (LVT) and carpet flooring.

**Cable, Internet, Water, Sewage, & Trash INCLUDED!**

# CALL TODAY



\*See reverse Referral Program details. Learn more about current promotional offers at [Facebook.com/DepotSquareFlats/offers/](https://www.facebook.com/DepotSquareFlats/offers/)



# DEPOT SQUARE FLATS

## APARTMENT FLOOR PLANS

### Contact Us



(812) 596-3528



DepotSquare@FLCO.com



315 E Pearl Street,  
Batesville, IN 47006



DepotSquareFlats.com

### Social Media



DepotSquareFlats



DepotSquareFlat



DepotSquareFlats



DepotSquareFlats



**FLAHERTY & COLLINS**  
PROPERTIES





# STUDIO

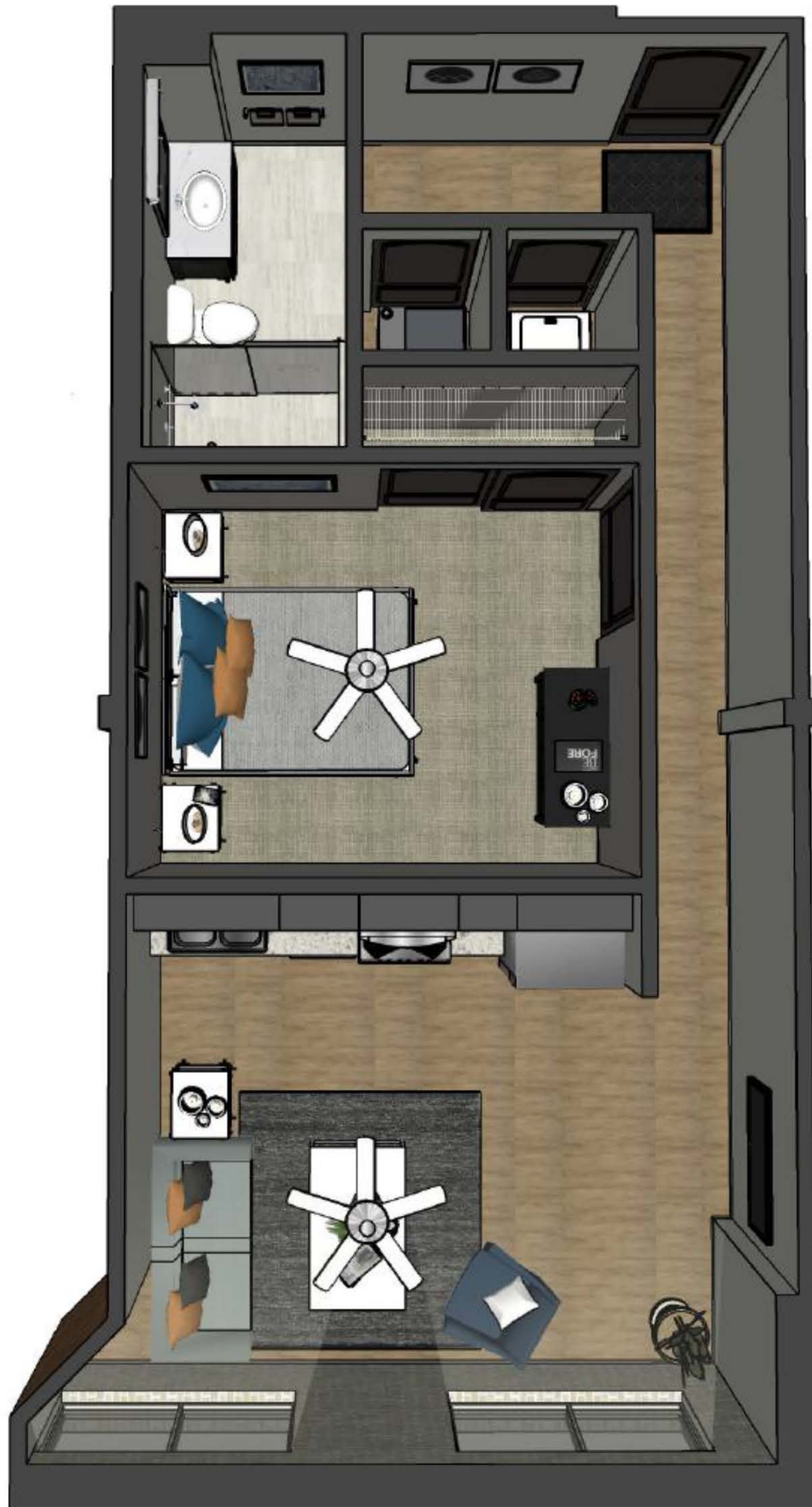
## FLOOR PLANS





# BARNHORST

Studio, 1 Bathroom  
606 - 609 Sq. Feet  
Rent: \$ 1,205



315 E. Pearl Street, Batesville, Indiana 47006

**Leasing Office: (812) 596-3528 or [DepotSquare@flco.com](mailto:DepotSquare@flco.com)**

Disclaimer: Rates for 12 month lease term, effective 6/16/21. Renderings are an artist's conception and are intended only as a general reference. Features, materials, finishes and layout of a subject unit may be different than shown.

**FLAHERTY & COLLINS**  
PROPERTIES





# ONE BEDROOM

## FLOOR PLANS





# ANTHONY W.

1 Bedroom, 1 Bathroom  
801 - 856 Sq. Feet  
Rent: \$ 1,290 - 1,350



315 E. Pearl Street, Batesville, Indiana 47006

**Leasing Office: (812) 596-3528 or [DepotSquare@flco.com](mailto:DepotSquare@flco.com)**

Disclaimer: Rates for 12 month lease term, effective 6/16/21. Renderings are an artist's conception and are intended only as a general reference. Features, materials, finishes and layout of a subject unit may be different than shown.

**FLAHERTY & COLLINS**  
PROPERTIES





# GEORGE H.

1 Bedroom, 1 Bathroom  
668 - 678 Sq. Feet  
Rent: \$ 1,170 - 1,190



315 E. Pearl Street, Batesville, Indiana 47006

**Leasing Office: (812) 596-3528 or [DepotSquare@flco.com](mailto:DepotSquare@flco.com)**

Disclaimer: Rates for 12 month lease term, effective 6/16/21. Renderings are an artist's conception and are intended only as a general reference. Features, materials, finishes and layout of a subject unit may be different than shown.

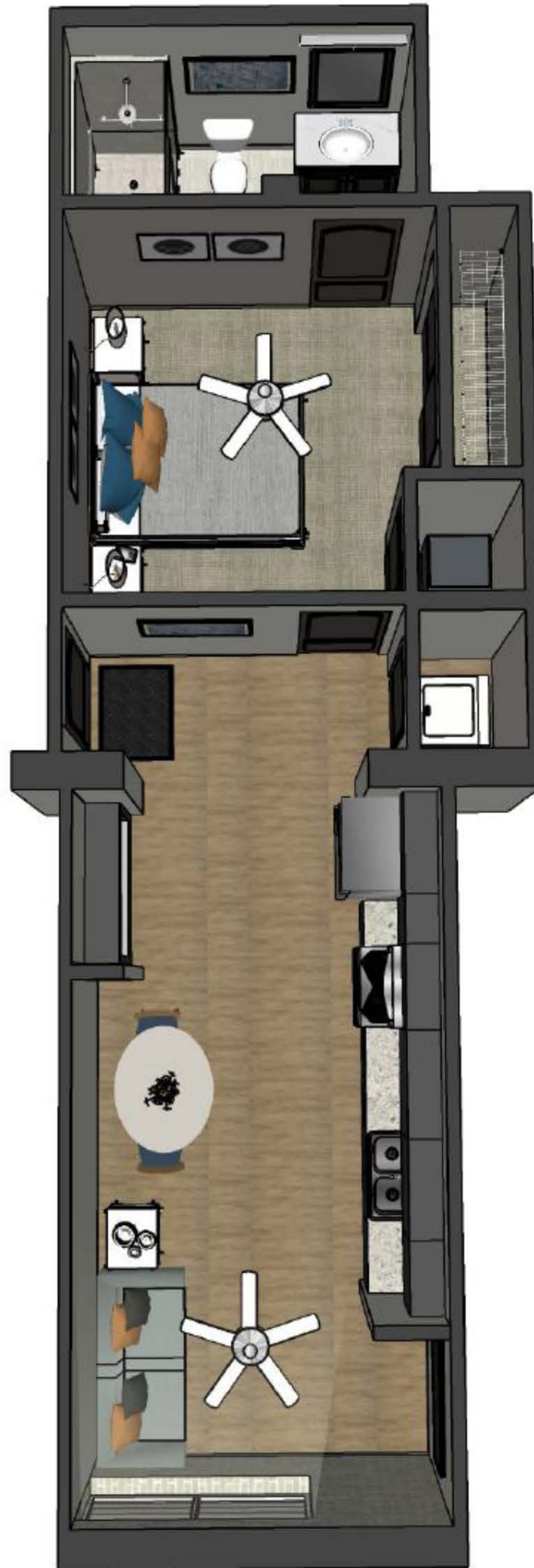
**FLAHERTY & COLLINS**  
PROPERTIES





# MITCHELL

1 Bedroom, 1 Bathroom  
532 - 544 Sq. Feet  
Rent: \$ 995 - 1,035



315 E. Pearl Street, Batesville, Indiana 47006

**Leasing Office: (812) 596-3528 or [DepotSquare@flco.com](mailto:DepotSquare@flco.com)**

Disclaimer: Rates for 12 month lease term, effective 6/16/21. Renderings are an artist's conception and are intended only as a general reference. Features, materials, finishes and layout of a subject unit may be different than shown.

**FLAHERTY & COLLINS**  
PROPERTIES





# ROBERT J.

1 Bedroom, 1 Bathroom  
759 - 772 Sq. Feet  
Rent: \$ 1,220 - 1,260



315 E. Pearl Street, Batesville, Indiana 47006

**Leasing Office: (812) 596-3528 or [DepotSquare@flco.com](mailto:DepotSquare@flco.com)**

Disclaimer: Rates for 12 month lease term, effective 6/16/21. Renderings are an artist's conception and are intended only as a general reference. Features, materials, finishes and layout of a subject unit may be different than shown.

**FLAHERTY & COLLINS**  
PROPERTIES





# WILLIAM A.

1 Bedroom, 1 Bathroom  
657 - 682 Sq. Feet  
Rent: \$ 1,170 - 1,210



315 E. Pearl Street, Batesville, Indiana 47006

**Leasing Office: (812) 596-3528 or [DepotSquare@flco.com](mailto:DepotSquare@flco.com)**

Disclaimer: Rates for 12 month lease term, effective 6/16/21. Renderings are an artist's conception and are intended only as a general reference. Features, materials, finishes and layout of a subject unit may be different than shown.





# TWO BEDROOM

## FLOOR PLANS





# BENZ

2 Bedroom, 1 Bathroom  
858 - 922 Sq. Feet  
Rent: \$ 1,345 - 1,385



315 E. Pearl Street, Batesville, Indiana 47006

**Leasing Office: (812) 596-3528 or [DepotSquare@flco.com](mailto:DepotSquare@flco.com)**

Disclaimer: Rates for 12 month lease term, effective 6/16/21. Renderings are an artist's conception and are intended only as a general reference. Features, materials, finishes and layout of a subject unit may be different than shown.

**FLAHERTY & COLLINS**  
PROPERTIES





# JOHN A.

2 Bedroom, 1 Bathroom  
974 - 979 Sq. Feet  
Rent: \$ 1,430



315 E. Pearl Street, Batesville, Indiana 47006

**Leasing Office: (812) 596-3528 or [DepotSquare@flco.com](mailto:DepotSquare@flco.com)**

Disclaimer: Rates for 12 month lease term, effective 6/16/21. Renderings are an artist's conception and are intended only as a general reference. Features, materials, finishes and layout of a subject unit may be different than shown.

**FLAHERTY & COLLINS**  
PROPERTIES





# PAUL C.

2 Bedroom, 2 Bathroom  
1,125 - 1,149 Sq. Feet  
Rent: \$ 1,495



315 E. Pearl Street, Batesville, Indiana 47006

**Leasing Office: (812) 596-3528 or [DepotSquare@flco.com](mailto:DepotSquare@flco.com)**

Disclaimer: Rates for 12 month lease term, effective 6/16/21. Renderings are an artist's conception and are intended only as a general reference. Features, materials, finishes and layout of a subject unit may be different than shown.

**FLAHERTY & COLLINS**  
PROPERTIES





# LOFT

## FLOOR PLANS





# HEITZMAN

2 Bedroom, 2 Bathroom  
1,145 - 1,162 Sq. Feet  
Rent: \$ 1,490



315 E. Pearl Street, Batesville, Indiana 47006

**Leasing Office: (812) 596-3528 or [DepotSquare@flco.com](mailto:DepotSquare@flco.com)**

Disclaimer: Rates for 12 month lease term, effective 6/16/21. Renderings are an artist's conception and are intended only as a general reference. Features, materials, finishes and layout of a subject unit may be different than shown.

